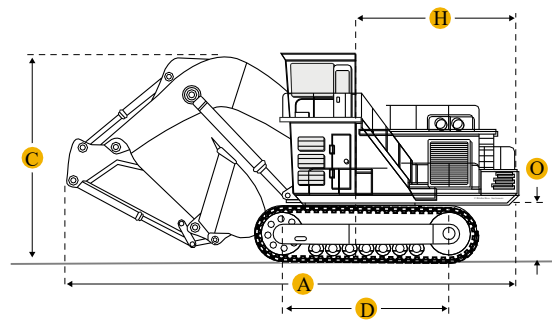
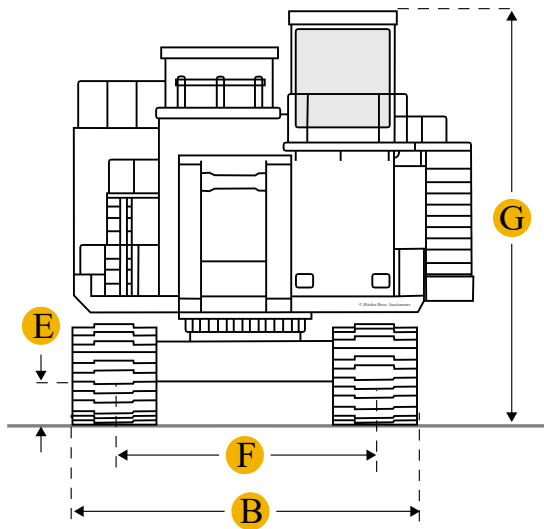
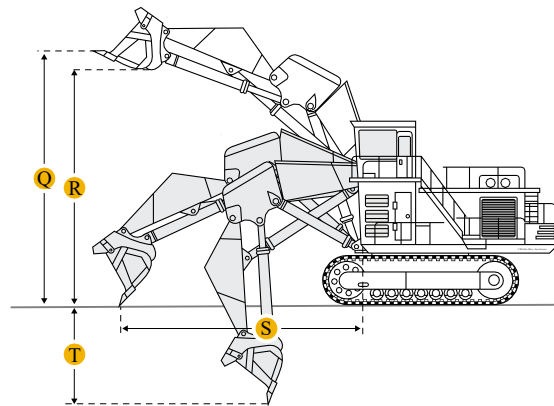
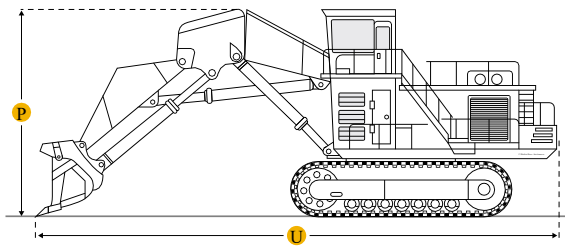
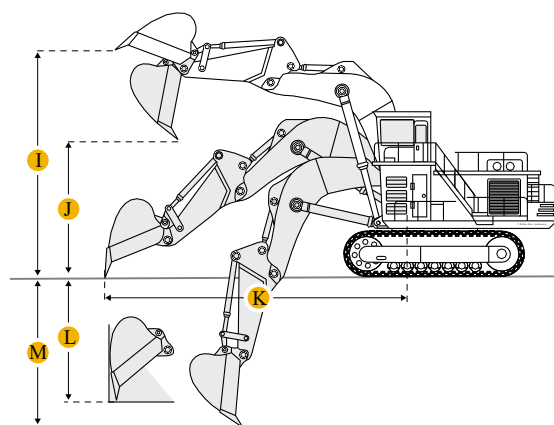


## Komatsu PC650-1 Shovel





Dimensions

Dimensions

B	Width Over Tracks	--
D	Length of Track on Ground	14.8 ft in
E	Ground Clearance	2.04 in
G	Height to Top of Cab	14.54 ft in

Loading Shovel

I	Max Cutting Height	34.78 ft in
J	Max Dump Height	24.48 ft in
M	Max Dig Depth	11.49 ft in
Q	Max Cutting Height	34.78 ft in
R	Max Dump Height	24.48 ft in
S	Max Dig Reach	32.81 ft in
T	Max Dig Depth	11.49 ft in

Undercarriage

N	Loading Shovel Shoe Width	24.02 in
---	---------------------------	----------

## Specifications

### Engine

<b>Engine Make</b>	2238
<b>Engine Model</b>	Cummins KT-1150-C450
<b>Gross Power</b>	410 hp
<b>Displacement</b>	1150 cu in
<b>Aspiration</b>	turbocharged

### Operational

<b>Fuel Capacity</b>	224.6 gal
<b>Hydraulic System Fluid Capacity</b>	118.9 gal
<b>Swing Speed</b>	4.3 rpm

### Undercarriage

<b>Max Travel Speed</b>	2.6 mph
<b>Loading Shovel Shoe Width</b>	24.1 in
<b>Loading Shovel Operating Weight</b>	151016.7 lb
<b>Loading Shovel Ground Pressure</b>	15.9 psi

### Loading Shovel

<b>Loading Shovel</b>	Boom 15'5" (4690mm)/Stick 10'6" (3210mm)
<b>Max Dig Depth</b>	11.5 ft in
<b>Max Cutting Height</b>	34.8 ft in
<b>Max Dump Height</b>	24.5 ft in
<b>Max Dig Reach</b>	32.9 ft in
<b>Arm Crowd Force</b>	99210 lb ft

### Dimensions

#### Width Over Tracks

<b>Height to Top of Cab</b>	14.6 ft in
<b>Length of Tracks</b>	19 ft in
<b>Length of Track on Ground</b>	14.8 ft in
<b>Ground Clearance</b>	2.1 in
<b>Upper Structure Ground Clearance</b>	3.9 ft in

---